

INTRODUCTION TO WYOMING WATER RIGHTS



Dan Laursen
Hydrographer
District 7, 15
October 16, 2021

Wyoming State Engineer's Office



If you anticipate an upcoming water project, whether it's a new groundwater well or new stock-watering pond, that project will most likely require a permit from the State Engineer's Office. The State Engineer's Office is committed to processing applications in a timely manner, even given the evolving situation surrounding the coronavirus disease 2019 (COVID-19) outbreak.

Consistent with recommendations of social distancing, and to prepare for potential staffing and workload challenges, the State Engineer recommends using our online e-Permit system (available at <http://seoweb.wyo.gov/e-Permit/Common/Login.aspx>) for all new applications.

For e-Permit questions, please contact:

Lisa Lindemann for Ground Water applications (lisa.lindemann@wyo.gov)

Nathan Graves for Surface Water applications (nathan.graves@wyo.gov)

Cheryl Timm for Board of Control activities (cheryl.timm@wyo.gov)

[e-Permit](#)

[News & Press Releases](#)

[Realtime Streamflow Data](#)

[Wyoming Weather Data](#)

[Wyoming Snow data](#)

[Apply](#)

[Change](#)

[Search For a Water Right](#)

[Adjudicate a Water Right](#)

Mission Statement



[Wyoming](#)

[Moving to Wyoming](#)

[Pay a Wyoming Ticket](#)

[Start a Business in](#)

[Wyoming](#)

[Volunteer in Wyoming](#)

[Wyoming Education](#)

[TRANSPORTATION](#)

[Game and Fish](#)

[State Parks and Cultural
Resources](#)

[Travel and Tourism](#)

[Travel Resources](#)

[Department of Family
Services](#)

[Department of Workforce
Services](#)

[Jobs in Wyoming](#)

[State Jobs](#)

[Follow us on Twitter](#)

[Check us out on Pintrest](#)

[Watch us on YouTube](#)

[Wyo.Gov](#) | [Business](#) | [Visitor](#) | [Privacy Policy](#)



Water Rights Basics

- Article 8 of Wyoming Constitution
 - “the water of all natural streams, springs, lake, or other collection of still water, within the boundaries of the state, are hereby declared to be the property of the state.”
 - Institutionalizes doctrine of prior appropriation, and new appropriations can be denied as required by the public interest.
 - Under this doctrine, the first person to put the water to beneficial use has first right, meaning “first in time is first in right”
 - Those with the earliest rights are entitled to water during periods of limited supply while those with later rights are denied water during such times.

Britannica Academic

- ⦿ **East of the Mississippi River uses Riparian right**
- ⦿ **Riparian right**, in [property law](#), doctrine pertaining to properties adjacent to a waterway that (a) governs the use of surface water and (b) gives all owners of land contiguous to streams, lakes, and ponds [equal rights](#) to the water, whether the right is exercised or not. The riparian right is usufructuary, meaning that the landowner does not own the water itself but instead enjoys a right to use the water and its surface (see [usufruct](#)).

Who need's a water right?

- ◉ Wyoming Statute 41-3-101 defines a water right as the right to use the water of the state in conformity with the rules and regulation, and by the basis of beneficial use.
- ◉ Any well, ditch, reservoir, pump, etc must have a water right.



State Engineer's Office

HERSCHLER BUILDING, 2-W CHEYENNE, WYOMING 82002
307 777-6150

MARK GORDON
GOVERNOR

RICK DEUELL
STATE ENGINEER

Wyoming Beneficial Uses

Irrigation use is the irrigation of any lands for agricultural purposes not included in the definition of domestic use.

Municipal use is water used within a municipality. (Water used within non-municipal subdivisions, trailer courts, etc. is not considered to be municipal use).

Industrial use includes water used in oil field secondary recovery operations, industrial processing, mining and other more or less permanent industrial uses. Examples of Industrial use include:

- Dewatering
- Drilling (activities of any type associated with drilling)
- Heat Extraction
- Manufacturing
- Milling
- Mining
- Power Generation
- Pollution Control
- Reclamation Watering
- Refining
- Sedimentation Control
- Other Industrial (Must be explained)

Domestic use is defined as household use and the watering of lawns and gardens for non-commercial family use, where the area to be irrigated does not exceed one (1) acre, and where the yield or flow does not exceed .056 cubic feet per second or twenty-five (25) gallons per minute.

Stock use is the normal watering of livestock. If feed lot operations are involved, the use should be designated as "Miscellaneous" and then described in detail in the application.

Miscellaneous uses consist of any other beneficial use not previously described. Examples of Miscellaneous uses include:

- Bathing
- Chemical Mixing
- Churches
- Coal Bed Natural Gas
- Commercial
 - Apartment Houses
 - Aquaculture.
 - Automobile Service Stations
 - Bottling Water

- Culinary
 - Dairy Product Processing
 - Feedlot/Stockyard
 - Hydropower Generation
 - Maintenance (Vehicle/Equipment Washing)
 - Medicinal
 - Motels
 - Snow Making
 - Trailer Courts
 - Other Commercial (Must be explained)
- Domestic Supply use is for domestic household use and irrigation for non-agricultural purposes not included in the definition of domestic use. For example, subdivision developments.
 - Environmental use (as authorized by the Wyoming Legislature)
 - Erosion Control
 - Fire Protection
 - Fish Propagation
 - Flood Control
 - Flow Through (to supply water at a rate that allows the exchange of the entire contents of a reservoir over a 30-day period)
 - Groundwater Recharge
 - Heat Extraction from Water
 - Highway Construction and Repair
 - Hydropower Generation (non-commercial)
 - Ice Cutting
 - Public Utility (non-municipal)
 - Railroad Construction and Maintenance
 - Recreation
 - Reservoir Supply
 - Schools
 - Steam Engines
 - Steam Generation
 - Temporary drilling or other temporary industrial purposes
 - Transportation
 - Wetlands
 - Wildlife
 - Other Miscellaneous (Must be explained)

Instream Flow use is the storage of water or unappropriated stream flow appropriated for the purpose of providing the minimum flow necessary to establish, maintain, or improve new or existing fisheries in accordance with W.S. §§ 41-3-1001 through 1014. No person other than the state of Wyoming shall own any instream flow water right.

Proof 3971

THE STATE OF WYOMING.

2 - 256

CERTIFICATE OF APPROPRIATION OF WATER.

Whereas, Alvin B. Noble
of Big Horn County, Wyoming, has presented to the Board of Control of the State of Wyoming proof of the appropriation of
water from Shell Creek tributary of Big Horn River
through the Beaver in 2 1/2 est. ditch formerly called Friesz ditch for Irrigation

Now Know Ye, That the Board of Control, under the provisions of Chapter 8 of the Session Laws of 1890-91, entitled "An Act Providing
for the Supervision and Use of the Waters of the State," approved December 22nd, 1890, has, by an order dated the 15th day of March
A. D. 1922, determined and established the priority and amount of appropriation as follows:

Name of Appropriator, Alvin B. Noble; Post-office Address, Shell, Wyoming

General Priority Number on main stream, 5; Number of Priority on Shell Creek

First Appropriation, 3; Second Appropriation, _____; Third Appropriation, _____

Amount of First Appropriation, 71 cubic feet per second; Second Appropriation, _____ cubic ft. per sec.; Third Appropriation, _____ cubic ft. per sec.

Date of First Appropriation, Spring 1887; Second Appropriation, _____; Third Appropriation, _____

Description of Land to be Irrigated: Fifty (50) acres; Being five (5) acres in N.E. 1/4 S.E. 1/4
Thirty five (35) acres in S.E. 1/4 S.E. 1/4 Ten (10) acres in S.W. 1/4 S.E. 1/4 Sec. Twenty eight (28) T.33N. R.91W

The right to water hereby confirmed and established is limited to Irrigation and the use is restricted to the place where ac-
quired and to the purpose for which acquired; rights for irrigation not to exceed one cubic foot per second for each seventy acres watered.

In Testimony Whereof, I, Ford Bond, President of the State Board of Control, have hereunto
set my hand this _____ day of _____, A. D. 1 _____, and caused the seal of said Board to be hereunto affixed.

ATTEST: _____ Secretary. _____ President.

Learned July 16 1902

Components of a Water Right

AMENDED

THE STATE OF WYOMING Certificate of Appropriation of Water

Proof No. 17409
Certificate Record No. 93 Page 211
Water Division No. 3, District No. 01

WHEREAS, Hopkins-Hamilton Ranch Company and Bill and Duveene, L. L. C. (successors in part to Jesse A. Taylor, original appropriator)

have presented to the Board of Control of the State of Wyoming proof of the appropriation

of water from Big or Middle Fork Popo Agie River, tributary Little Wind River, tributary Big Horn River, tributary Yellowstone River

through the Enlarged Dutch Flat Ditch

under Permit No. 1694 Enl.; -----irrigation, stock, domestic herein described, lying and being in Fremont County, Wyoming.

NOW KNOW YE, That the State Board of Control, under the provisions of the Statutes of Wyoming, has, by Interlocutory Decree of the District Court, dated November 8, 2012 and entered on February 20, 2013, determined and established the priority and amount of such appropriation as follows:

Name and Address of Appropriator(s) Hopkins-Hamilton Ranch Company and Bill and Duveene, L. L. C., 551 Lyons Valley Road, Lander, Wyoming 82520

; Date of Appropriation (Priority) March 9, 1907; Amount of Appropriation 2.88 cu. ft. per sec.;

Total Acreage 201.84; Head Gate NE $\frac{1}{4}$ N $\frac{1}{2}$ E $\frac{1}{4}$, Section 25, T33N, R100W

DESCRIPTION OF LAND TO BE IRRIGATED AND FOR WHICH THIS APPROPRIATION IS DETERMINED AND ESTABLISHED

TWP	RANGE	SEC	NE ¼				NW ¼				SW ¼				SE ¼				TOTAL
			NE¼	NW¼	SW¼	SE¼	NE¼	NW¼	SW¼	SE¼	NE¼	NW¼	SW¼	SE¼	NE¼	NW¼	SW¼	SE¼	
33N	98W	06											Lot 7 20.03						20.03
33N	98W	07					Lot 1 9.94	Lot 2 5.51			Lot 3 1.04								16.49
33N	99W	01													11.70	21.22		17.71	50.63
33N	99W	12	7.17			14.96									21.11	3.84	26.59	2.62	76.29
33N	99W	13	12.86	8.60	16.94														38.40
																		Total:	201.84

THIS AMENDED CERTIFICATE IS ISSUED IN PART IN LIEU OF THE ORIGINAL CERTIFICATE OF APPROPRIATION OF RECORD IN CERTIFICATE RECORD 42, PAGE 580 AND AMENDS THE ORDER OF ADJUDICATION OF RECORD IN ORDER RECORD BOOK 6, PAGE 107, PROOF NO. 17409.

This Amended Certificate is issued in accordance with the Interlocutory Decree of the District Court Fifth Judicial District dated November 8, 2012. See Interlocutory Decree Book 22, Page 179.

The right to water hereby confirmed and established is limited to irrigation, stock, domestic and the use is restricted to the place where acquired and to the purpose for which acquired; rights for irrigation not to exceed one cubic foot of water per second for each seventy acres of land for which the appropriation is herein determined and established; except when there is surplus water available under provisions of Sections 41-4-317 thru 41-4-325, W.S. 1977, and where there is excess water available under provisions of Section 41-4-329 thru 41-4-331, W.S. 1985.

IN TESTIMONY WHEREOF, I, Patrick T. Tyrrell President of the State Board of Control, have hereunto set my hand this 20th day of February, A.D. 2013,

and caused the seal of said Board to be hereunto affixed.

Attest: Allan Cunningham Ex-officio Secretary

Patrick T. Tyrrell President.

TABULATION OF
ADJUDICATED SURFACE WATER RIGHTS
OF THE
STATE OF WYOMING

WATER DIVISION NUMBER THREE
OCTOBER 2003

Stream	Page	Stream	Page
SCYBERT DRAW, Tributary Big Sand Draw	600	SHORT DRAW, Tributary Dry Cheyenne Draw	520
SECTION 1 DRAW, Tributary Meeyero Creek	418	SHORT DRAW, Tributary Little Denver Jake Draw	395
SECTION 13 DRAW, Tributary County Line Draw	282	SHORT DRAW, Tributary Long Drain, Tributary Sage Creek (10-56-96)	99
SECTION 23 DRAW, Tributary Fifteen Mile Creek	380	SHORT DRAW, Tributary Long Draw, Tributary Crystal Creek	200
SECTION 36 DRAW, Tributary Alkali Creek	328	SHORT DRAW, Tributary Roach Gulch, Tributary Renner Creek	281
SECTION 42 DRAW, Tributary Nowood River	372	SHORT FORK MEETEETSE CREEK, Tributary Meeteetse Creek	289
SECTION 5 DRAW, Tributary Potato Gulch	213	SHORT FORK ROCKY DRAW, Tributary Rocky Draw	237
SECTION 6 DRAW, Tributary Wiggins Fork	576	SHORT GULCH, Tributary Voss Draw, Tributary Narrow Draw	103
SEEP CREEK, Tributary Sand Draw No. 4, Tributary Sand Draw No. 3	603	SHORT PASS DRAW, Tributary Lisbon Creek	67
SERRANO CREEK, Tributary Dry Creek (5-52-93)	237	SHORT SPRING NO. 1, Tributary Middle Fork Owl Creek	459
SEVENTEEN DRAW, Tributary Adams Creek	353	SHORT SPRING NO. 2, Tributary Middle Fork Owl Creek	459
SEVENTY-ONE SPRING, Tributary Deer Creek	516	SHORT SPRING NO. 3, Tributary Middle Fork Owl Creek	459
SHADY CREEK, Tributary Neves Fork of Willow Creek	280	SHORTY'S DRAW, Tributary Wagon Prong	398
SHAFFER DRAW (A Dry Draw)	463	SHOSHONE CREEK, Tributary North Fork Popo Agie River	645
SHAG CREEK, Tributary Tough Creek	476	SHOSHONE RIVER, Tributary Big Horn River	74
SHALE DRAW, Tributary Bud Kimball Creek	354	SHOT GUN CREEK, Tributary Muddy Creek	480
SHEARING PENS SPRING, Tributary Shearing Pen Draw	285	SHRUBBY DRAW, Tributary West Fork Coon Creek	102
SHEBA SPRING, Tributary Sheba Draw, Tributary Mitzi Spring Creek	137	SIDE GULCH, Tributary West Fork Coon Creek	103
SHEEP CAMP SPRINGS, Tributary Coal Mine Gulch	238	SIDE STEP DRAW, Tributary North Fork Buffalo Creek	363
SHEEP CANYON CREEK, Tributary Hornecker Creek	650	SIDEWINDER CREEK, Tributary Diamondback Draw	451
SHEEP CORRAL DRAW, Tributary Maverick Butte Draw	516	SIGGINS SPRING, Tributary Siggins Draw	189
SHEEP CREEK, Tributary Dorsey Creek	277	SIGNOR DRAW, Tributary Horse Shoe Creek, Tributary Conant Creek	523
SHEEP CREEK, Tributary Elk Creek	307	SILT DRAW, Tributary North Fork Buffalo Creek	364
SHEEP CREEK, Tributary Five Springs Creek	197	SILTED DRAW, Tributary Hidden Dome Creek	335
SHEEP CREEK, Tributary Muddy Creek	478	SILVER TIP CREEK, Tributary Clark's Fork River	4
SHEEP CREEK, Tributary Paint Creek	18	SILVER TIP GULCH, Tributary Silver Tip Creek	4
SHEEP CREEK, Tributary South Fork Shoshone River	176	SIOUX CREEK, Tributary Badwater Creek	510
SHEEP DOG DRAW, Tributary Big Horn River	198	SITE DRAW, Tributary Badlands Draw No. 2	601
SHEEP DRAW, Tributary Foster Gulch	100	SITTING BULL SPRING, Tributary Lake Creek	352
SHEEP DRAW, Tributary South Fork Denver Jake Draw	396	SIX MILE CREEK, Tributary Big Horn River	376
SHEEP HERDER DRAW, Tributary Sheep Dog Draw	198	SIX MILE CREEK, Tributary Du Noir River	590
SHEEP RANCH DRAW, Tributary Manny Draw	277	SIXTY NINE DRAW, Tributary Dry Cheyenne Draw	520
SHEEP RIDGE DRAW, Tributary Big Wind River	583	SKEETER DRAW, Tributary Gooseberry Creek	410
SHEEP SPRING, Tributary Sheep Spring Draw	465	SKI SPRING CREEK, Tributary Big Wind River	592
SHELL CANAL DRAW, Tributary Boulden Gulch	212	SKINNER SPRING, Tributary Ruby Draw	460
SHELL CREEK, Tributary Big Horn River	206	SKINNER WELL SPRING, Tributary Ruby Draw	460
SHELL RANGER STATION SPRING NUMBER ONE	229	SKULL GULCH, Tributary Twin Creek	633
SHELL RANGER STATION SPRING NUMBER TWO	229	SLACK CREEK, Tributary North Fork Shoshone River	136
SHELLY GULCH, Tributary White Creek, Tributary Shell Creek	227	SLANT DRAW, Tributary Demer Draw	395
SHERIDAN CREEK, Tributary Big Wind River	593	SLEEPER DRAW, Tributary Blackstone Gulch	284
SHINER DRAW, Tributary Whistle Creek	105	SLEEPER DRAW, Tributary Park Draw	239
SHIOLL DRAW, Tributary Big Horn River	519	SLICK CREEK, Tributary Greybull River	290
SHOOP SPRING, Tributary South Fork Owl Creek	456	SLIM DRAW, Tributary South Fork Denver Jake Draw	395
SHORT CREEK, Tributary Little Buffalo Creek	413	SLINGSHOT DRAW, Tributary South Fork Fifteen Mile Creek	384
SHORT CREEK, Tributary Long Creek	592	SLIPPERY ANN DRAW, Tributary Curtis Draw	12
SHORT CUT DRAW, Tributary Shaw Creek, Tributary Buffalo Creek	365	SLOUGH (16-51-96), Tributary Greybull River	278

(Surface water rights are listed in the table by the main stream and tributaries beginning at the mouth of the stream or at the state boundary line and proceeding toward the source of such main stream. Numbers following a source name refer to the section, township and range which is the mouth of the stream of creek or where it enters the stream or creek to which it is a tributary. This index is arranged alphabetically by the first line of the tributary title in the table, then by table page number.)

Tabulation of Adjudicated Water Rights of the State of Wyoming - Water Division Number 3, Surface Water

October 2003

Permit	Facility Name	Appropriator	Priority	Use	Amount	Unit	Acres	HG Loc	Proof No.	Comments
--------	---------------	--------------	----------	-----	--------	------	-------	--------	-----------	----------

JACK SPRATT DRAW, Tributary West Fork North Emblem Draw

P7033R	Jack Spratt Reservoir	USDI, Bureau of Land Management	7-15-1966	STO	12.600	AF		NWNE	31-54-95	29179
--------	-----------------------	---------------------------------	-----------	-----	--------	----	--	------	----------	-------

WAGON SPOKE DRAW, Tributary Little Dry Creek

P13710SR	Dodge Stock Reservoir	USDI, Bureau of Land Management	11-1-1982	STO	9.600	AF		SESE	29-53-94	0
<i>(Adjudicated by Decree of Fifth Judicial District Court, February 1983. No certificate of construction issued.)</i>										

GAYLE DRAW, Tributary Little Dry Creek, Tributary Big Horn River

P13712SR	Two Dike Stock Reservoir	USDI, Bureau of Land Management	11-1-1982	STO	4.000	AF		NESE	30-53-94	0
<i>(Adjudicated by Decree of Fifth Judicial District Court, February 1983. No certificate of construction issued.)</i>										
P9169SR	JM Stock Reservoir	USDI, Bureau of Land Management	7-28-1983	STO	3.940	AF		SENE	6-53-95	35151

IN THE DRAINAGE OF THE BIG HORN RIVER, Tributary Yellowstone River

P9647R	Greybull Sewage Treatment Lagoon	Town of Greybull	7-20-1990	IND	152.000	AF			L49-52-93	37889
--------	----------------------------------	------------------	-----------	-----	---------	----	--	--	-----------	-------

WISHBONE DRAW, Tributary Little Dry Creek, Tributary Big Horn River

P13713SR	Werbelow #2 Stock Reservoir	USDI, Bureau of Land Management	11-1-1982	STO	8.200	AF		SESW	25-53-95	0
<i>(Adjudicated by Decree of Fifth Judicial District Court, February 1983. No certificate of construction issued.)</i>										

LOST GULCH, Tributary Little Dry Creek, Tributary Big Horn River

P13711SR	Werbelow #1 Stock Reservoir	USDI, Bureau of Land Management	11-1-1982	STO	8.900	AF		SENW	31-53-94	0
<i>(Adjudicated by Decree of Fifth Judicial District Court, February 1983. No certificate of construction issued.)</i>										

SHELL CREEK, Tributary Big Horn River

NOTE : McDonald Ditch is also known as the Shell Canal

T3965-	McDonald Ditch	George H. Sabin	Spring 1886	IRR	2.000	CFS	140.00	NESW	26-53-91	3965
T3966-	McDonald Ditch	Estate of Jordan L. Smith	Spring 1886	IRR	1.500	CFS	105.00	NESW	26-53-91	3966
T3967-	Odessa Ditch	Jacob J. Rech	1-10-1887	IRR	1.930	CFS	135.00		33-53-92	3967
T3968-	Odessa Ditch	Frank J. Halfman	1-10-1887	IRR	1.360	CFS	95.00		33-53-92	3968
T3969-	Odessa Ditch	David H. Null	1-10-1887	IRR	0.920	CFS	64.00		33-53-92	3969
T3970-	Odessa Ditch	Charles Sheldon	1-10-1887	IRR	0.930	CFS	65.00	NWSE	33-53-92	3970
T3971-	Frieze Ditch	Alvin B. Noble	Spring 1887	IRR	0.710	CFS	50.00	SESW	27-53-91	3971
<i>(Adjudicated as "Beaver Enlargement & Extension, formerly called the Frieze Ditch".)</i>										

Tabulation of Adjudicated Water Rights of the State of Wyoming - Water Division Number 3, Surface Water

October 2003

Permit	Facility Name	Appropriator	Priority	Use	Amount	Unit	Acres	HG Loc	Proof No.	Comments
T3972-	Allen & Hough Ditch	Andrew T. Jackson	Spring 1887	IRR	1.570	CFS	110.00	NESE	26-53-91	3972 <i>(Point of diversion and means of conveyance for 55.0 acres changed to the McDonald Ditch or Shell Canal (26-53-91), November 20, 1926. Point of diversion and means of conveyance for 55.0 acres changed to the McDonald Ditch or Shell Canal(26-53-91), November 17,1933.)</i>
T3973-	Allen & Hough Ditch	Albert E. Lewis	Spring 1887	IRR	11.790	CFS	125.00	NESE	26-53-91	3973 <i>(Point of diversion and means of conveyance for 55.0 acres changed to the McDonald Ditch or Shell Canal (26-53-91), November 20, 1926.)</i>
T3974-	Dunshee Ditch	Phillip Bullet	4-15-1888	IRR	1.790	CFS	125.00	L40-52-93	3974	
T3975-	Dunshee Ditch	Jessee L. Linn	4-15-1888	IRR	6.740	CFS	472.00	L40-52-93	3975	
T3976-	Denny Ditch	John L. Fenton	5-8-1888	IRR	3.290	CFS	230.00	31-53-92	3976	
T3977-	Whaley Ditch	William T. Whaley	1889	IRR	2.030	CFS	142.00	32-53-91	3977	
P365D	Porter Canal	Fred W. Barnett	11-18-1892	IRR	0.143	CFS	10.00	NWSW	25-53-92	37403
P365D	Porter Canal	Wayne F. Barnett	11-18-1892	IRR	0.090	CFS	6.00	NWSW	25-53-92	37417
P365D	Porter Canal	Benjamin T. Boyce	11-18-1892	IRR	4.190	CFS	293.00	NWSW	25-53-92	3979
P365D	Porter Canal	John H. Davis	11-18-1892	IRR	2.830	CFS	198.00	NWSW	25-53-92	3983
P365D	Porter Canal	Albert Herren	11-18-1892	IRR	2.230	CFS	156.00	NWSW	25-53-92	3982
P365D	Porter Canal	Andrew T. Jackson	11-18-1892	IRR	2.040	CFS	143.00	NWSW	25-53-92	3980 <i>(Petition to correct Certificate Record, November 13, 1996.)</i>
P365D	Porter Canal	Louis A. Lewis	11-18-1892	IRR	1.710	CFS	120.00	NWSW	25-53-92	3984
P365D	Porter Canal	Donald R. and Mary Ann Reichmuth	11-18-1892	IRR	0.200	CFS	14.00	NWSW	25-53-92	37418
P365D	Porter Canal	John Scharen	11-18-1892	IRR	1.140	CFS	80.00	NWSW	25-53-92	3981
P365D	Porter Canal	Annie Wingenried	11-18-1892	IRR	0.850	CFS	60.00	NWSW	25-53-92	3978
P430D	McDonald Ditch	Charles I. Babb	3-7-1893	IRR	0.930	CFS	65.00	SWNE	19-53-90	3985 <i>(155.0 acres (2.21 c.f.s.) detached from the irrigation of 220.0 acres (3.14 c.f.s.) and changed to preferred use for domestic and municipal purposes for the Town of Greybull through the Greybull Pipe Line, 19-53-90.)</i>
P430D	McDonald Ditch	Town of Greybull	3-7-1893	MUN,DOM,CU L,BAT,RAI,ST E, HEAT,REFRIG	1.326	CFS		SWNE	26-53-90	3985 <i>(Amended certificate issued, in part, to the successor of Charles I. Babb, original appropriator. 1.326 c.f.s. changed to preferred use for municipal, domestic, culinary, bathing, refrigerating, railway use, steam engine, and heating plant purposes through the Greybull Pipe Line, with 0.884 c.f.s. being allowed to remain in stream in lieu of return flow.)</i>
P508D	Kershner Ditch	Andrew A. Kershner	6-1-1893	IRR	1.230	CFS	86.00	SENE	19-53-90	3986
P42E	Enl. Whaley Ditch	John D. Allen	6-17-1893	IRR	2.930	CFS	205.00	NWSE	33-53-91	3988
P42E	Enl. Whaley Ditch	The Estate of Agnes Hoover	6-17-1893	IRR	5.360	CFS	375.00	NWSE	33-53-91	3987
P42E	Enl. Whaley Ditch	William M. Leavitt	6-17-1893	IRR	1.740	CFS	112.00	NWSE	33-53-91	3989
P1010D	Rath Ditch	Robert E. Rath	7-5-1895	IRR	1.170	CFS	82.00	NWNE	25-53-91	3990
P176E	Enl. Kershner Ditch	Riley Kane	12-26-1895	IRR	1.000	CFS	70.00	SENE	19-53-90	3991
P176E	Enl. Kershner Ditch	Robert E. Rath	12-26-1895	IRR	1.250	CFS	87.30	SENE	19-53-90	3993
P176E	Enl. Kershner Ditch	Abraham F. Trone	12-26-1895	IRR	1.080	CFS	75.80	SENE	19-53-90	3992

United States Department of the Interior
Bureau of Land Management
Cadastral Survey

Specifications for Descriptions of Land:
For Use in Land Orders, Executive Orders, Proclamations,
Federal Register Documents, and Land Description Databases

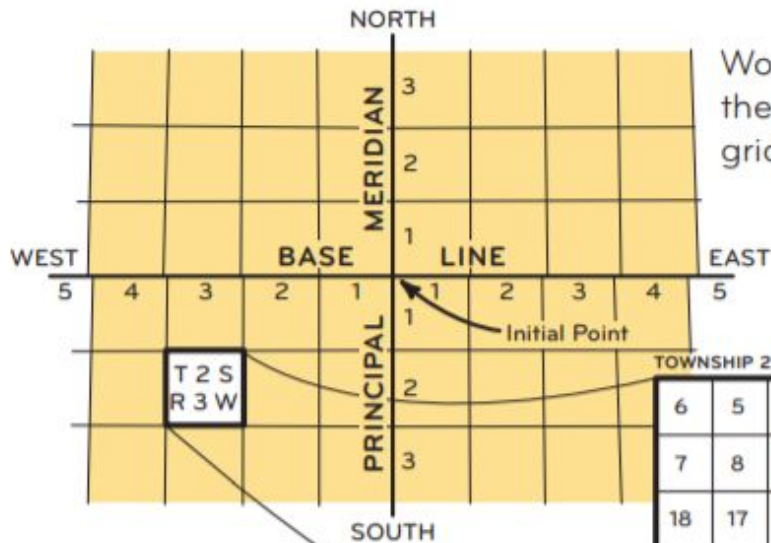


Revised 2015

BLM



TOWNSHIP GRID

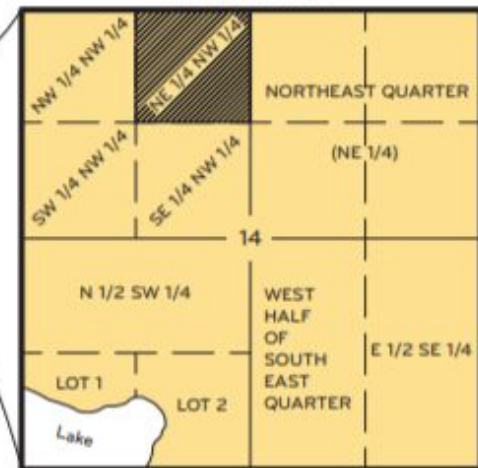


Working from a principal meridian and base line, the surveyor marks off the township lines into grids of 36 square miles.

TOWNSHIP 2 SOUTH, RANGE 3 WEST

6	5	4	3	2	1
7	8	9	10	11	12
18	17	16	15	SEC 14	13
19	20	21	22	23	24
30	29	28	27	26	25
31	32	33	34	35	36

SECTION 14



Townships are further divided into sections of 1 square mile (640 acres). Sections are then numbered from 1 to 36.

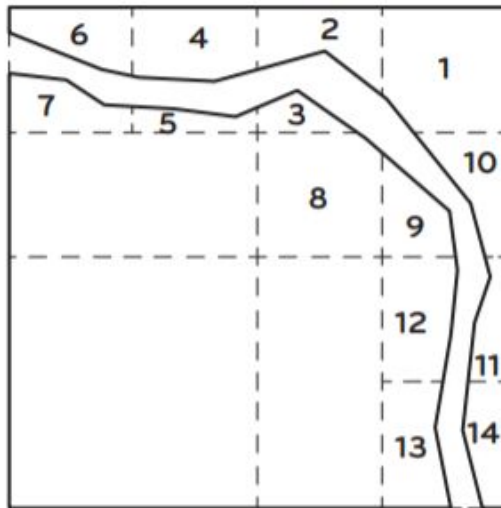
Figure 2. Example of township and range lines for the establishment of townships, section lines for the establishment of sections, and subdivision of section lines for the establishment of aliquot parts and lots of a section.

- ◎ **Definition of *aliquot***

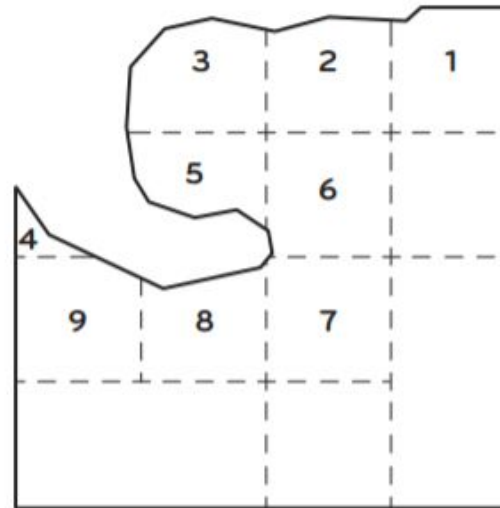
 - contained an exact number of times in something else —used of a divisor or part.

 - 5 is an *aliquot* part of 15.

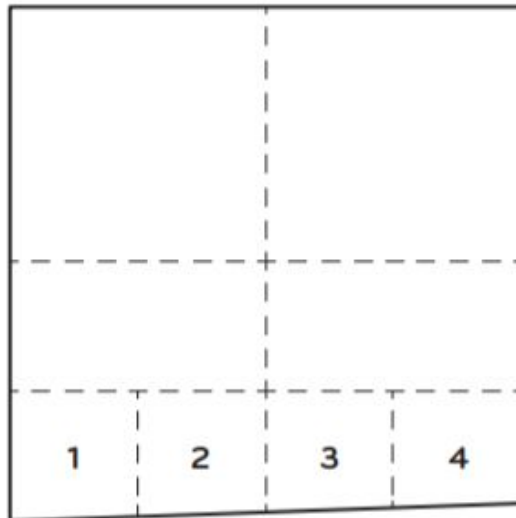
- ◎ Lots are a legal subdivision of a section and designated by section and lot numbers such as “sec. 3, lot 1.” Lots cannot be described as aliquot.



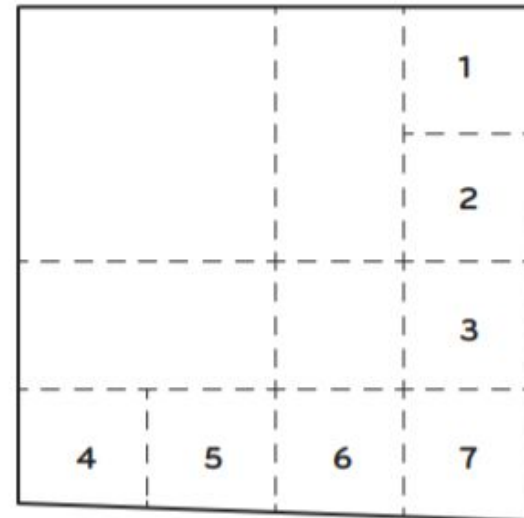
Meanderable River.



Meanderable Lake.



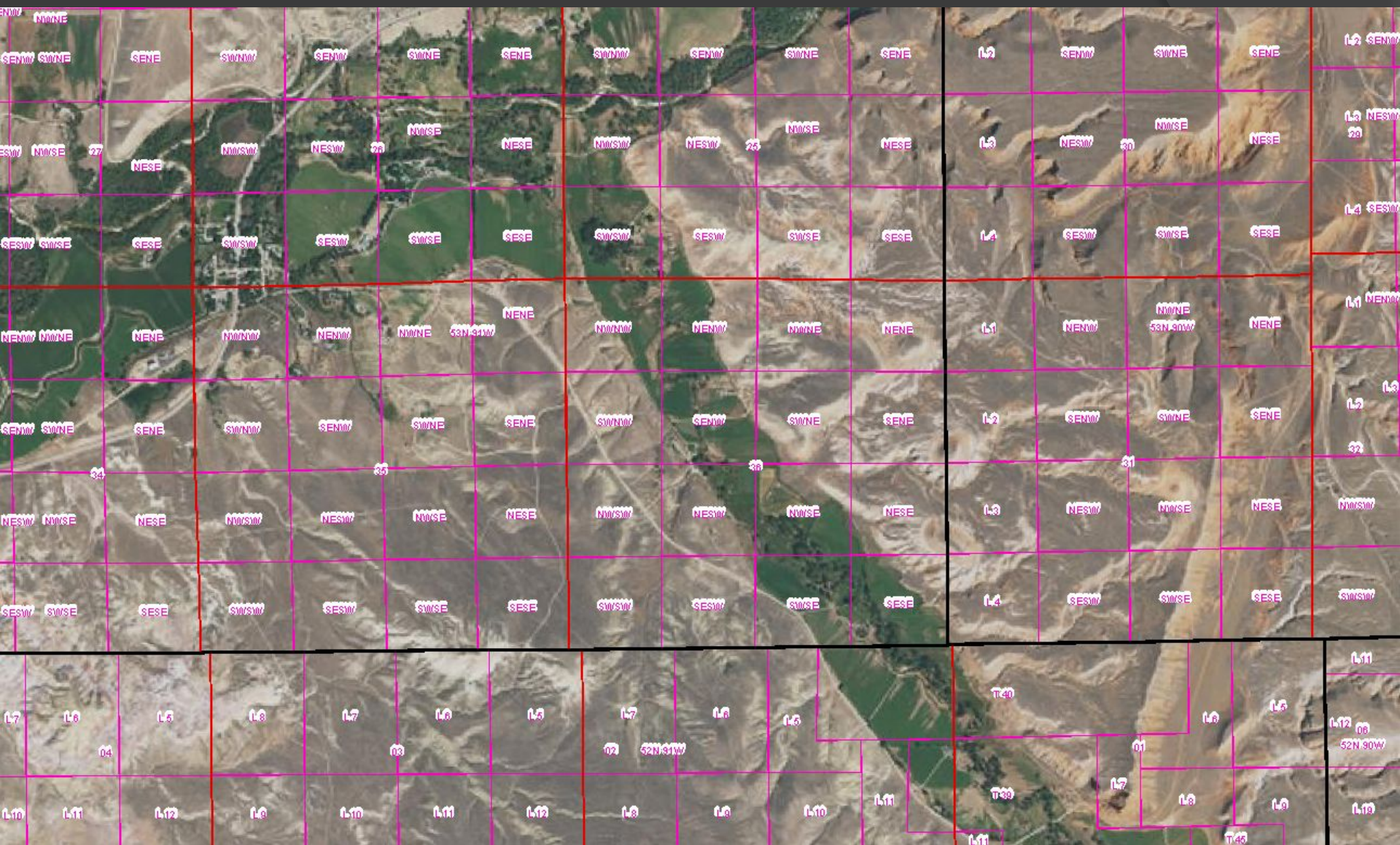
S. bdy. defective in alinement.



E. & S. bdrs. defective in alinement.

Figure 3. Examples of subdivision of sections by protraction and showing lots.

- ① Tracts should follow the sections because a tract is part of a township, as is a section, and is numbered the same as a section, beginning with 37 or the next highest unused numerical designation to avoid confusion with section numbers. Tracts can often be comprised of q/q or lots.



3554

Index to Segregated Tracts

Resurvey Township No 56 North, Range No 102 West of the Sixth Principal Meridian, Wyoming

Contract No 341 Albert B. Bartlett, August 16, 1909.

Resurvey Tract No	Original Survey			Subdivision	Entry		Status in Land Office	Entryman
	T.	R.	Sec.		Kind	Number		
37	56	102	31	lots 3 & 4, NE ¹ / ₄ SW ¹ / ₄ NW ¹ / ₄ SE ¹ / ₄	D	011	Patented	James P. Kimball
38	"	"	31	SE ¹ / ₄ SE ¹ / ₄	D	1098	Valid	W.O. Percy Fullerton
	"	"	32	W ¹ / ₄ SW ¹ / ₄				
	55	102	6	Lot 1				
39	56	102	29	E ¹ / ₄ SW ¹ / ₄	D	533	Patented	Farley Kimball
	"	"	32	E ¹ / ₄ NW ¹ / ₄				
40	"	"	17	SW ¹ / ₄ SE ¹ / ₄	D	996	Patented	Nina Kimball
	"	"	20	SE ¹ / ₄ SW ¹ / ₄ W ¹ / ₄ E ¹ / ₄				
	"	"	29	E ¹ / ₄ NW ¹ / ₄				
41	"	"	6	SE ¹ / ₄ SE ¹ / ₄	H	1061	Valid	George T. Hopkins
	"	"	17	E ¹ / ₄ NE ¹ / ₄ NE ¹ / ₄ SE ¹ / ₄				
42	"	"	18	All	S.A.H.	353	Valid	Wyoming
43	"	"	8	NE ¹ / ₄ SE ¹ / ₄ , SE ¹ / ₄ NE ¹ / ₄	H	0666	Valid	Frank G. Hopkins
44	"	"	8	NE ¹ / ₄ NE ¹ / ₄	H	04172	Valid	C.E. Taylor
	"	"	9	N ¹ / ₄ NW ¹ / ₄				
	"	"	4	SW ¹ / ₄ SW ¹ / ₄				
45	"	"	8	W ¹ / ₄ NW ¹ / ₄ SW ¹ / ₄ NE ¹ / ₄ SE ¹ / ₄ NW ¹ / ₄	H	1217	Patented	S. Judson Hubbard
46	"	"	3	lots 3 & 4, SE ¹ / ₄ NW ¹ / ₄	H	883	Patented	August A. Myling
47	57	102	32	SW ¹ / ₄ SE ¹ / ₄				
47	50	"	32	NE ¹ / ₄ NW ¹ / ₄	S.A.H.	1247	Patented	Russell Kimball
48	"	"	36	All	S.T.	37	Valid	Wyoming
49	"	"	22	SE ¹ / ₄ SE ¹ / ₄	S.L.		Valid	"
50	"	"	5	lots 1, 2, 3, & 4	L.S.	1272	Patented	Northern Pacific Ry. Co.
51	"	"	3	SW ¹ / ₄ NW ¹ / ₄	L.S.	1272	Patented	"
52	"	"	3	lots 1 & 2, S ¹ / ₄ NE ¹ / ₄	L.S.	1272	Patented	"
53	"	"	1	lots 1, 2, 3, & 4, S ¹ / ₄ N ¹ / ₄	L.S.	1272	Patented	"
54	56	102	6	All	S.L.		Valid	Wyoming
56	"	"	7	lots 1, 2, 3, E ¹ / ₄ NW ¹ / ₄ NW ¹ / ₄ NE ¹ / ₄ SW ¹ / ₄	S.L.		Valid	"
57	55	102	6	lots 2, SW ¹ / ₄ NE ¹ / ₄	S.A.H.	1337	Patented	Henry Chapman
62	56	102	30	lots 2, 3 & 4, E ¹ / ₄ SW ¹ / ₄ SE ¹ / ₄ S ¹ / ₄ NE ¹ / ₄	S.L.		Valid	Wyoming
63	"	"	31	lots 1, 2, 3, NE ¹ / ₄ E ¹ / ₄ NW ¹ / ₄ NW ¹ / ₄ SW ¹ / ₄ SE ¹ / ₄	S.L.		Valid	"

The above index to tracts which have been segregated by the original public survey in the resurvey of T. 56 N., R. 102 W. under Contract No. 341 has been prepared in strict conformity with the field notes of the accepted resurvey on file in this office which have been examined and approved.

Surveyor General's Office,
Cheyenne, Wyoming
November 21, 1913

Charles Ricketts
Surveyor General

Resurvey	Original Survey								
	Tract No	T.	R.	Sec.	Subdivision	Entry		Status in Land Office	Entryman
						Kind	Number		
	37	56	102	31	Lots 3 & 4, NE ¹ SW ⁴ , NW ¹ SE ⁴	D	011	Patented	James P. Kimball
	38	"	"	31	SE ¹ SE ⁴	D	1092	Valid	W.G. Percy Fullerton
		"	"	32	W ¹ SW ⁴				
		55	102	6	Lot 1				
	39	56	102	29	E ¹ SW ⁴	D	533	Patented	Forley Kimball
	"	"	"	32	E ¹ NW ⁴				
	40	"	"	17	SW ¹ SE ⁴	D	995	Patented	Nina Kimball
	"	"	"	20	SE ¹ SW ⁴ , W ¹ E ²				
	"	"	"	29	E ¹ NW ⁴				
	41	"	"	8	SE ¹ SE ⁴	H	1861	Valid	George T. Hopkins
	"	"	"	17	E ¹ NE ¹ , NE ¹ SE ⁴				
	42	"	"	16	All	S.S		Valid	Wyoming
	43	"	"	8	NE ¹ SE ⁴ , SE ¹ NE ⁴	H	0886	Valid	Frank G. Hopkins
	44	"	"	8	NE ¹ NE ⁴	H	04172	Valid	C.E. Taylor
	"	"	"	9	N ¹ NW ⁴				
	"	"	"	4	SW ¹ SW ⁴				
	45	"	"	8	W ¹ NW ⁴ , SW ¹ NE ⁴ , SE ¹ NW ⁴	H	1217	Patented	S. Judson Hubbard
	46	"	"	3	Lots 3 & 4, SE ¹ NW ⁴	H	563	Patented	August A. Myling
		57	102	35	SW ¹ SE ⁴				
	47	56	"	35	NE ¹ NW ⁴	SAW	1247	Patented	Russell Kimball
	48	"	"	26	All	S.S		Valid	Wyoming
	49	"	"	25	SE ¹ SE ⁴			Valid	"
	50	"	"	5	Lots 1, 2, 3, & 4	L.S	List 2	Patented	Northern Pacific Ry. Co
	51	"	"	3	SW ¹ NW ⁴	L.S	List 2	Patented	" " "
	52	"	"	3	Lots 1 & 2, S ¹ NE ⁴	L.S	List 2	Patented	" " "
	53	"	"	1	Lots 1, 2, 3, & 4, S ¹ N ⁴	L.S	List 2	Patented	" " "
	55	56	101	6	All	SL		Valid	Wyoming
	56	"	"	7	Lots 1, 2, & 3, E ¹ NW ⁴ , NW ¹ NE ⁴ , NE ¹ SW ⁴	SL		Valid	"
	57	55	102	6	Lot 2, SW ¹ NE ⁴	SAW	1357	Patented	Henry Chapman
	62	56	101	30	Lots 2, 3, & 4, E ¹ SW ⁴ , SE ¹ , S ¹ NE ⁴	SL		Valid	Wyoming
	63	"	"	31	Lots 1, 2, & 3, NE ¹ E ¹ NW ⁴ , NE ¹ SW ⁴ , NW ¹ SE ⁴	SL		Valid	"

The above maps to tracts which have been segregated by the original public survey in the resurvey of T. 56 N., R. 102 W. under Contract No. 341 has been prepared in strict conformity with the field notes of the accepted resurvey on file in this office which have been examined

Process of getting a water right

- ① Application
- ② Permit
- ③ Proof
- ④ Advertising
- ⑤ Adjudication

E30068
50.00

11/19/19 02:00 PM

NOTE: Do not fold this form. Use typewriter or print neatly with black ink.

STATE OF WYOMING

OFFICE OF THE STATE ENGINEER

JACY MCNUITY

APPLICATION FOR PERMIT TO APPROPRIATE SURFACE WATER

THIS SECTION IS NOT TO BE FILLED IN BY APPLICANT

Filing Priority Date:

THE STATE OF WYOMING }
STATE ENGINEER'S OFFICE } SS.

This instrument was received and filed for record on the 19th day of November, 2019, at 02:00 o'clock P. M.

JASON FELTNER For State Engineer

Recorded in Book 169 of Ditch Permits, on Page 96

Fee Paid \$ 25.00 Map Filed

WATER DIVISION NO. 3 DISTRICT NO. 7 TEMPORARY FILING NO. 37 4060D

PERMIT NO. P36267.0D

NAME OF FACILITY PORTER SPRINGS DOMESTIC SUPPLY PIPELINE

1. Name(s), mailing address and phone no. of applicant(s) is/are LANCE C AND DARLENE R. CHEATHAM, 3229 DAVIS RD, GREYSULL, Wyoming, 82426, PH: 307-765-2915

E-mail address: cheathamdarlene@gmail.com

2. Name & address of agent to receive correspondence and notices LANCE C AND DARLENE R. CHEATHAM, 3229 DAVIS RD, GREYSULL, Wyoming, 82426, PH: 307-765-2915

E-mail address: cheathamdarlene@gmail.com

3. (a) The use to which the water is to be applied is Domestic Supply
(b) If more than one beneficial use of water is applied for, the location and ownership of the point of use must be shown in item 10 of the application and the details of the facilities used to divert and convey the appropriation must be shown on the map in sufficient detail to allow the State Engineer to establish the amount of appropriation. In multiple use applications, stock and domestic purposes are limited to 0.056 cubic feet per second.

4. The source of the proposed appropriation is Porter Springs, tributary of Rock Draw, tributary of Shell Creek, tributary of Big Horn River, tributary of Yellowstone River, tributary of Missouri River

5. The point of diversion of the proposed works is located N15° 22' 33.00" E, 1662.810 feet distant from the S1/4 corner of Section 34 T. 053N R. 092W and is in the S81/4 of Section 34 T. 053N R. 092W Lot Black Subdivision Name 44 5283944444 Longitude (Decimal Degrees) -107.9228305586

6. Are any of the lands crossed by the proposed facility owned by the State or Federal government? If so, describe lands and indicate whether State or Federally owned.

7. The carrying capacity of the ditch, canal, pipeline or other facility at the point of diversion is 0.154 cubic feet per second (cfs.)

8. The accompanying map is prepared in accordance with the State Engineer's Rules and Regulations for filing applications and is hereby declared a part of this application. The State Engineer may require the filing of detailed construction plans.

9. The estimated time required for the completion of construction is 1 month, and to complete the application of water to the beneficial uses stated in this application is 1 month.

Permit No. P36267.0D

Page No. 169/96
(Leave Blank)

10. The land to be irrigated under this permit is described in the following tabulation. (Give irrigable acreage in each 40-acre subdivision. Designate ownership of land, Federal, State or private. If private, list names of owners and land owned separately.) If application is for stock, domestic, or for purposes other than irrigation, indicate point of use by 40-acre subdivision and owner.

Town	Range	Sec.	NE 1/4				NW 1/4				SW 1/4				SE 1/4							
			NE 1/4	NW 1/4	SW 1/4	SE 1/4	NE 1/4	NW 1/4	SW 1/4	SE 1/4	NE 1/4	NW 1/4	SW 1/4	SE 1/4	NE 1/4	NW 1/4	SW 1/4	SE 1/4				
Reserve			For watering of lands and household use.																			
053N	092W	34																	A	X		
Reserve			For watering of lands and household use.																			
053N	092W	34																	A	X		

Number of acres to receive original supply 0.00
Number of acres to receive supplemental supply 0.00
Total number of acres to be irrigated 0.00

REMARKS

I declare that I have examined this application and to the best of my knowledge and belief it is true, correct and complete.

LANCE C AND DARLENE R CHEATHAM
Printed Name and Signature of Applicant or Agent

November 19, 2019
Date

13 Q. (a) Has the water been used beneficially and land irrigated each year since the time for the completion of irrigation stated in your permit? (b) And during what months is water beneficially used?

A. (a) It has (b) May, June, July, Aug and Sept.

14 Q. What crops were grown on this land in 1920? A. Wheat, oats, barley, potatoes, alfalfa and pasture.

15 Q. In what county is the above described land situated

A. Fremont County

16 Q. Give amount of your investment in the construction of ditch and laterals.

A. \$200.00 for laterals from main ditch. Main ditch cost me \$54,000.00

17 Q. Are you the owner of the lands described herein? A. I am.

Jesse A. Taylor

THE STATE OF WYOMING, }
COUNTY OF Fremont } SS.

I, Jesse Taylor, being first duly sworn, do depose and say that I have read the above and foregoing proof of appropriation of water; that I know the contents thereof; and that the facts therein stated are true.

IN WITNESS WHEREOF, I have hereunder set my hand this 5 day of August

A. D. 1921

..... the undersigned, familiar with the above described irrigation works and hereby state that the above statements are correct, to the best of my knowledge and belief.

Jesse A. Taylor

Subscribed and sworn to before me this

5 day of August 1921

Low Blakely
Superintendent, Water Division No. 2

AM

Getting a water right common questions

Why is this such a long process?

How long is my water right good for?

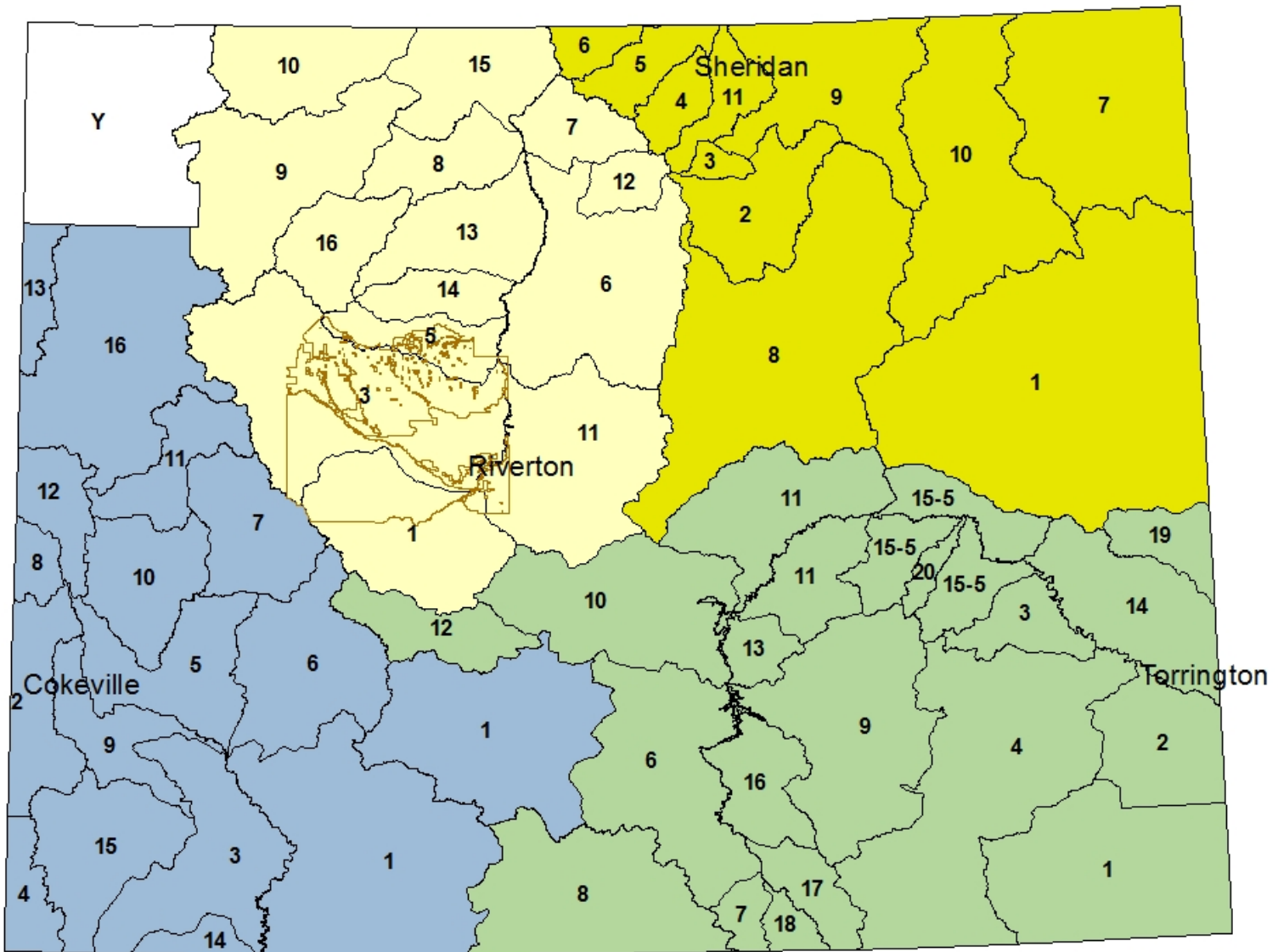
Abandoned, forced or voluntary

Why did I get a letter from the State
Engineer's office that my permit will
expire?

Water Administration

- ⦿ State Engineer – Chief Administrator
- ⦿ Wyoming Board of Control
 - Quasi-Judicial Board
 - having a partly judicial character by possession of the right to hold hearings on and conduct investigations into disputed claims and alleged infractions of rules and regulations and to make decisions in the general manner of courts
 - State Engineer is President plus four Division Superintendants
 - Meets Quarterly
- ⦿ Hydrographer/Commissioner

State Engineer's Divisions and Districts



Water Regulation

- Free River – Sufficient water for all users
- Excess Water – Pre March 1, 1985 rights fulfilled with up to a double appropriation (in regulation)
- Surplus Water– Pre March 1, 1945 rights fulfilled with up to a double appropriation (in regulation)
- Irrigation Water permitted for 1cfs/70ac

Regulation, Continued

- ◉ When a call is placed on the river, reductions are made based on priority to prevent injury to senior users.
- ◉ The calling ditch must have a lockable headgate and a working measuring device.
- ◉ Calling ditch must make every effort to capture all water from the permitted source.

Regulation, Continued

- Headgates will be tagged by Water Commissioner
- Formal regulation by the Water Commissioner ends at the headgate. The appropriators on the ditch or the ditch company should regulate down ditch.

Ditch Rights

Ditch rights are separate from water rights.

The use or ownership of a ditch is considered private property and is managed by civil law.

Please use the Ditch Rights and Easements pamphlet available on the SEO website for more information.

Documents/Data

- [Real-time SEO Surface Water Data](#)
- [Field Division's Data links](#)
- [Hydrographer-Commissioner Manual](#)
- [Hydrographer Reports](#)
- [Maps and Spatial Data](#)
- [Groundwater Hydrographs](#)
- [Associated Water Links](#)
- [Wyoming Water Law a Summary](#)
- [Selected Writings of Elwood Mead](#)
- [Legal Aspects of Ditch Rights and Easements](#)
- [Living on Small Acreage](#)
- [Sage Grouse Escape Ladders](#)
- [Consumptive Use and Consumptive Irrigation Requirements in Wyoming](#)
- [Annual Reports and Strategic Plans](#)



LEGAL ASPECTS RELATING TO DITCH RIGHTS AND EASEMENTS



State of Wyoming

Board of Control

Revised 2009

4. Question: If I can find no written easement of any kind, how do I know if I have a prescriptive easement?

Answer: The accepted understanding of prescriptive acquisition of ditch easements was enunciated by the Wyoming Supreme Court in the 1956 case of Haines vs Galles, wherein it was said: "Easements may be created by prescription or, more properly speaking under the modern doctrine, by presumption... . In time, the fiction of a "lost grant" [has been] adopted by the courts—that is, the courts presumed, from the long possession and exercise of right by the defendant with the acquiescence of the owner, that there must have been originally a grant by the owner to the claimant which has [since] become lost.... Today...in most of the states in the United States..., the rule is that the period for acquiring an easement ...corresponds...to the local statute of limitations [which, in Wyoming, is ten (10) years]. It has been emphasized that a prescriptive right is founded upon the presumption of a grant."

In short, the fact that a ditch is found to exist in its present location suggests that, at some time in the past, the landowners agreed that it could be constructed there. If it has existed there for a period of ten years or longer, it has probably established its easement and cannot be removed, except by agreement of all affected parties.

5. Question: What if the ditch has been in place for a period of time less than the period prescribed by the statute of limitations; i.e. less than 10 years?

Answer: Then it may not have established a prescriptive easement, and its existence may be challenged in a civil court by any affected party.

6. Question: If I am buying, or selling, a parcel of land with appurtenant water rights, and there is no documented easement for my ditch(es) which cross neighboring properties, what assurance do I have that the easements are secure, assuming I feel sure that they have been successfully acquired by prescription by having been in place ten years or longer?

Answer: This question was addressed by the Wyoming Supreme Court in 1893 and the answer is still in use today. In the Frank vs Hicks case, the courts stated:

"A water right acquired for irrigation of lands and the ditch or other conduit for the water passes by a conveyance of the realty without being specifically mentioned." (emphasis added).

7. Question: Suppose I have acquired a ditch right by prescription across neighboring properties. What do the statutes say about the width of my easement; that is, how many feet am I allowed alongside my ditch to come and go on my neighbor's property?

Answer: There is nothing in the statutes which specifies a required width for ditch easements. By definition, an easement is an interest held by one owner in the property of another which



Wyoming Small Acreage **IRRIGATION**

Caleb Carter, Kristi Hansen, Windy Kelley,
Lucy Pauley; Ed. J. Thompson

B-1306
December 2017



**BARNYARDS
& BACKYARDS**
RURAL LIFE IN WYOMING



ADMINISTRATION OF WYOMING WATER AND SMALL-ACREAGE IRRIGATION

Large tracts of land were once a part of the same irrigation system – likely owned by one ranch. A previous owner decided to subdivide the land, which resulted in many private landowners with connected water rights. The structure of Wyoming water and small acreages is similar to the original structure with a few additions, such as a subdivision spokesperson. The following is a schematic of the administrative positions of Wyoming's water and small-acreage irrigation and the role(s) of each level.

- State engineer
 - » Chief administrator of Wyoming water regulation
 - » Job: Supervision and protection of Wyoming waters
 - ◊ Appropriation, distribution, and application of water to beneficial use
- Division superintendents (4)
 - » Administers water for each of their divisions [See Figure 2] with assistance from hydrographer commissioners and water commissioners below.
 - ◊ Division 1: North and South Platte River drainages, and the Niobrara and Little Snake River drainages (office in Torrington)
 - ◊ Division 2: includes all drainages north of the North Platte and Niobrara River drainages and east of the Bighorn Mountains (office in Sheridan)
 - ◊ Division 3: Big Horn and Clark's Fork River drainages (office in Riverton)
 - ◊ Division 4: Green, Bear, and Snake River drainages, and most of the Great Divide Basin (office in Cokeville)
- Wyoming Board of Control is comprised of the state engineer and the four division superintendents
 - » Supervision and protection of Wyoming waters
 - ◊ Adjudication of water rights
 - ◊ Approval of modifications of adjudicated and some unadjudicated water rights
- Water commissioner/hydrographer commissioners
 - » Assists division superintendent in administering water – duties may include:
 - ◊ Routine administration of surface water sources following a "call for regulation"
 - ◊ Measuring streamflow, reservoir content, and operation and maintenance of stream gauging stations and networks
 - ◊ Inspecting water structures and land under water rights permits for compliance and adjudication
 - ◊ Meets with and advises water resource users
- Irrigation districts
 - » An organized group that acts to provide water to its shareholders on a proportionate basis
 - » Public, mandatory, and fee collecting entity
 - » Water is allocated by acre
 - » Can create rules/bylaws for handling water within their boundaries without outside oversight (governed by statutes; held accountable by Department of Audit)
- Mutual ditch company
 - » An organized group that acts to supply and deliver water to its shareholders on a proportionate basis
 - » Private, voluntary, and fee-collecting entity
 - » Holds and manages water rights for shareholders who have pro-rata interest (share)
- Lateral ditch company
 - » An organized group that acts to provide water to its shareholders and maintains the lateral ditch system
 - » Generally smaller and separate legal entities from mutual ditch companies (lateral ditches tend to branch off from mutual ditches)

- Ditch rider/manager
 - » Hired by a ditch company or irrigation district to maintain a ditch and open and close headgates as necessary
 - » Calculates ditch volumes and oversees ditch operations
 - » Coordinates water diversions and “calls” with the water commissioner/hydrographer commissioner during irrigation season
 - » Note: sometimes smaller ditch companies use a rotating “ditch captain” to coordinate efforts with the water commissioner
- Spokesperson
 - » An appointed person who speaks with the irrigation district, water commissioner, and/or ditch rider on behalf of the ditch co-owners
- Co-owners
 - » Individual, small-acreage landowners who have equal water rights and use the same water delivery system
 - » Share the operation and maintenance responsibilities and expenses
- Subdivision/homeowner association/etc.
 - » Can create rules/bylaws for handling irrigation water within their boundaries without outside oversight

Source: Wyoming Water Resources Data System (2015).

Figure 2: Administrative Water Divisions of Wyoming



Are there any questions

- ◉ Dan Laursen

Hydrographer District 7 and 15

307-754-3145

daniel.laursen@wyo.gov